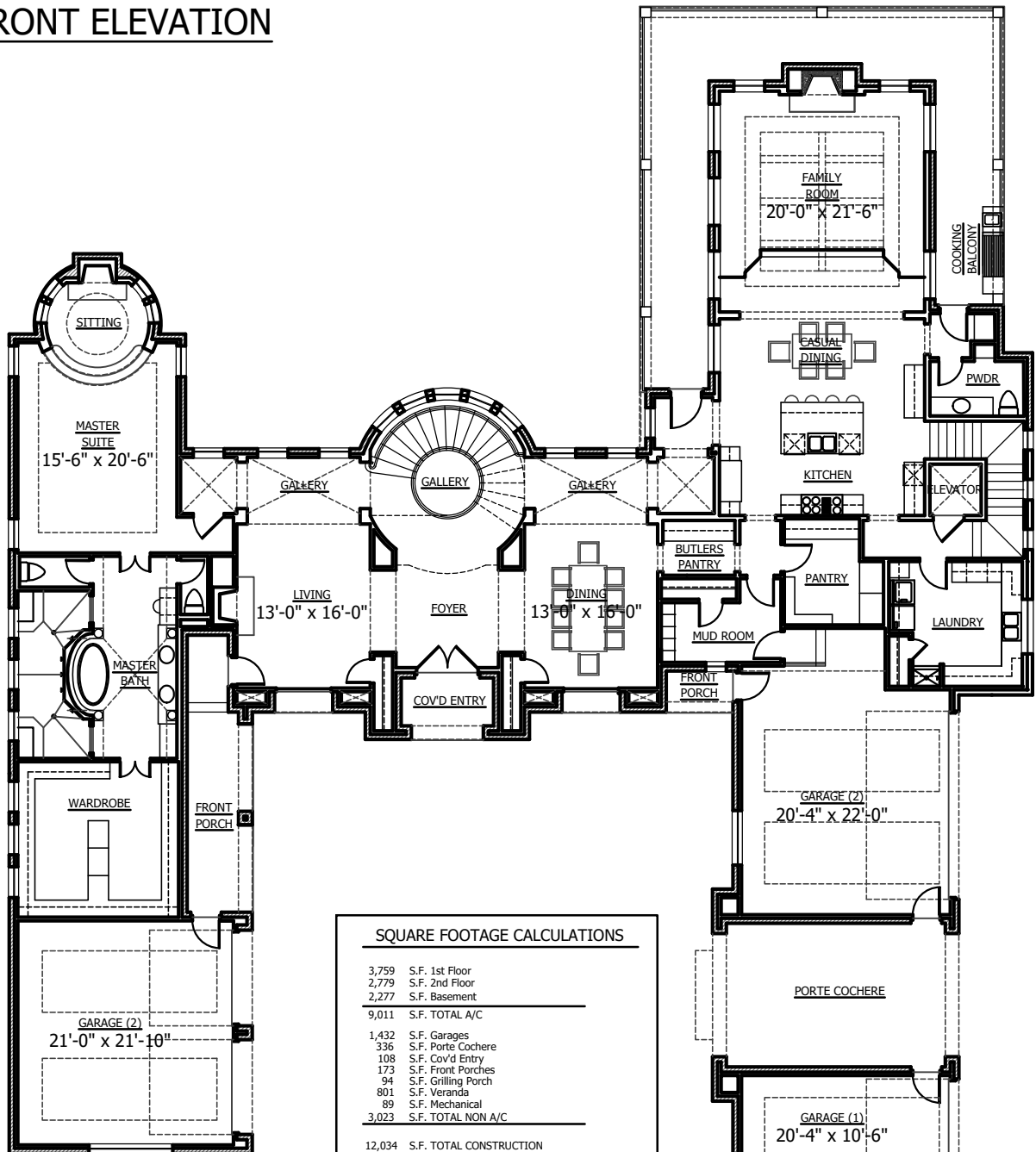


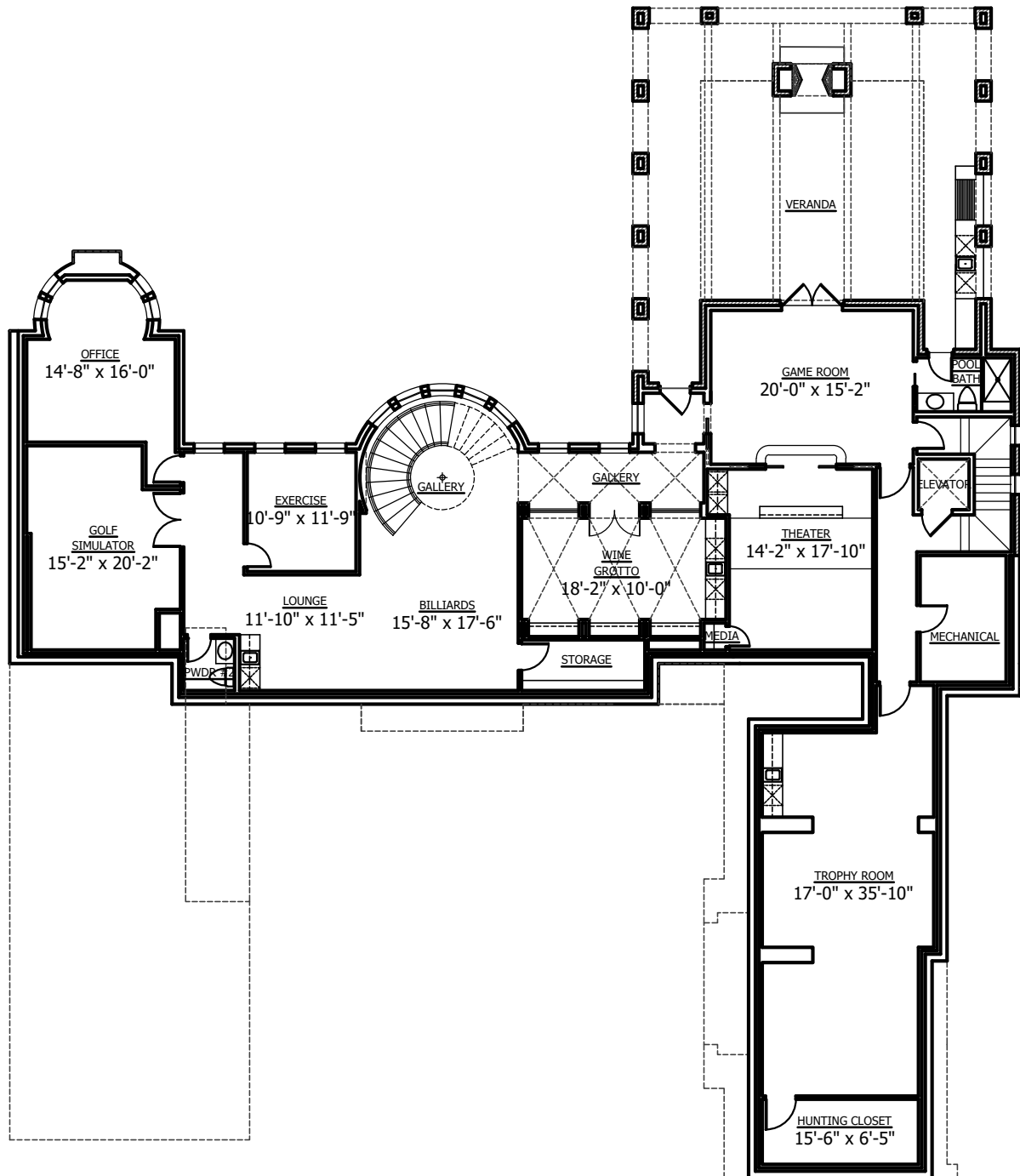


FRONT ELEVATION



FIRST FLOOR PLAN

SQUARE FOOTAGE CALCULATIONS	
3,759	S.F. 1st Floor
2,779	S.F. 2nd Floor
2,277	S.F. Basement
<hr/>	
9,011	S.F. TOTAL A/C
<hr/>	
1,432	S.F. Garages
336	S.F. Porte Cochere
108	S.F. Cov'd Entry
173	S.F. Front Porches
94	S.F. Grilling Porch
801	S.F. Veranda
89	S.F. Mechanical
<hr/>	
3,023	S.F. TOTAL NON A/C
<hr/>	
12,034	S.F. TOTAL CONSTRUCTION
5,791	S.F. TOTAL LOT COVERAGE
31,268	S.F. TOTAL SITE AREA
<hr/>	
18.5%	TOTAL LOT COVERAGE

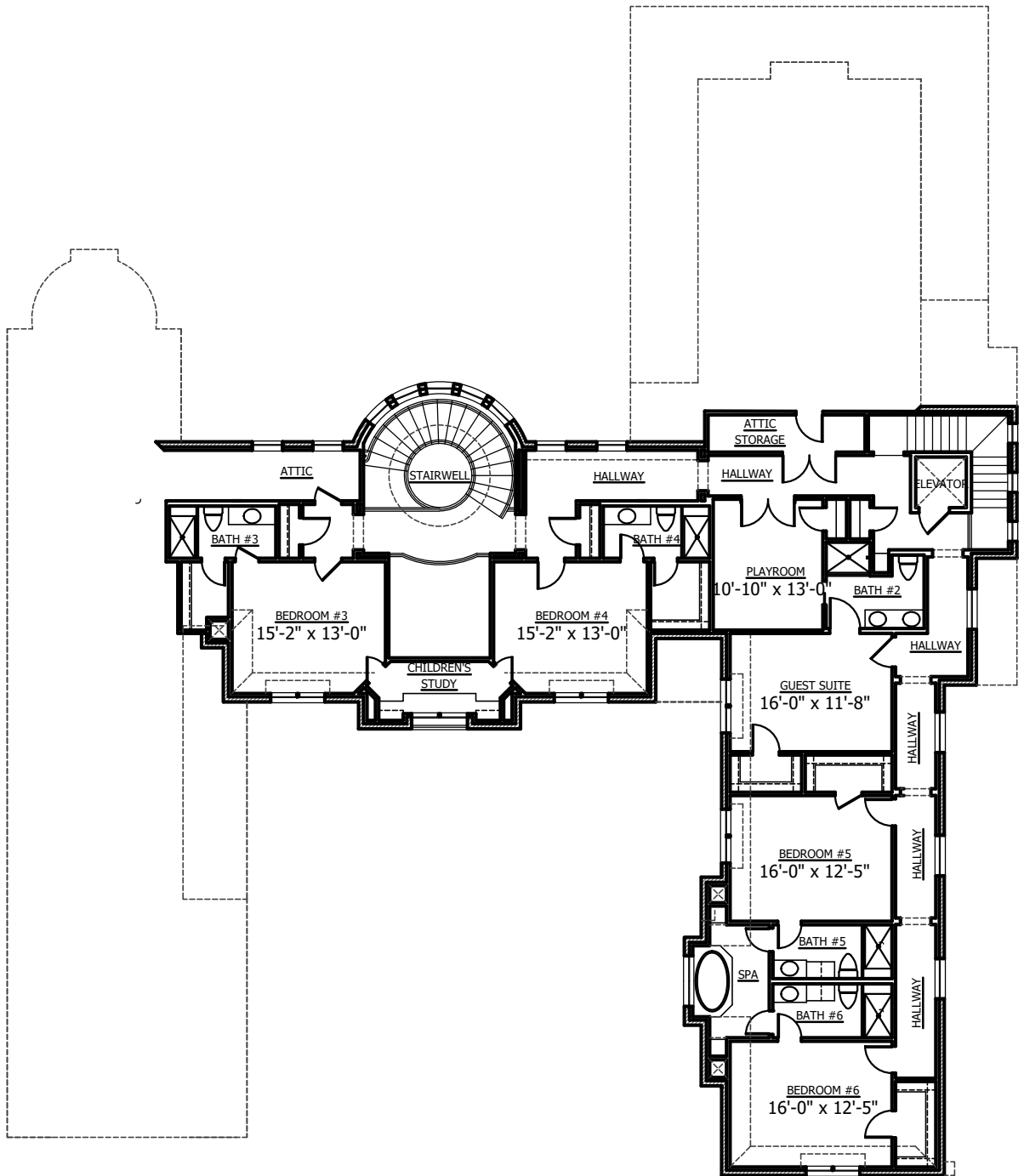


BASEMENT FLOOR PLAN



Bush
ARCHITECTS

4700 Westgrove Dr. Ste. 200
Addison TX, 75001



SECOND FLOOR PLAN



Bush
ARCHITECTS

4700 Westgrove Dr. Ste. 200
Addison TX, 75001